



# HOSOKAWA BEPEX GmbH

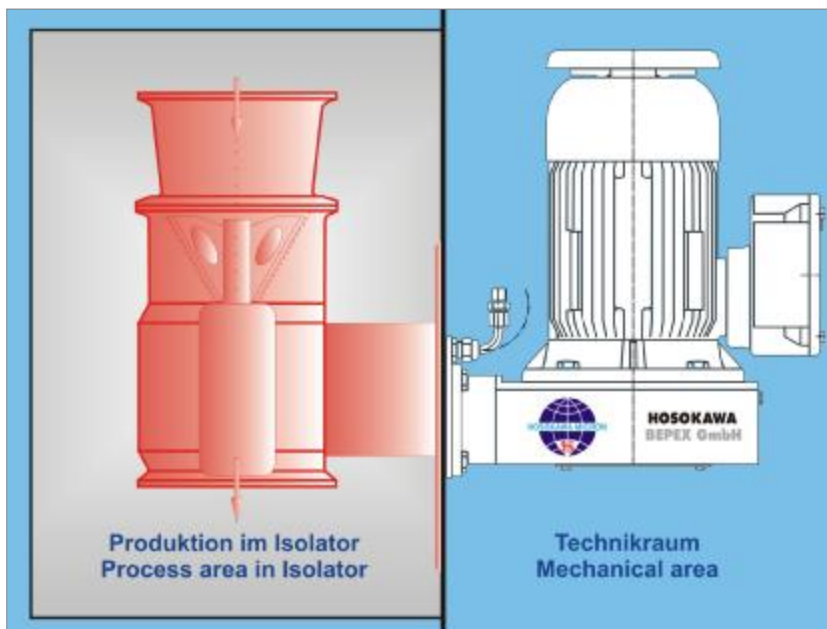
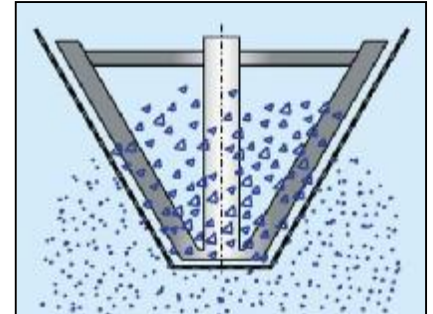
Technologies for compaction, briquetting, extrusion and spheronization

## news **LETTER**

2006 – no. 1

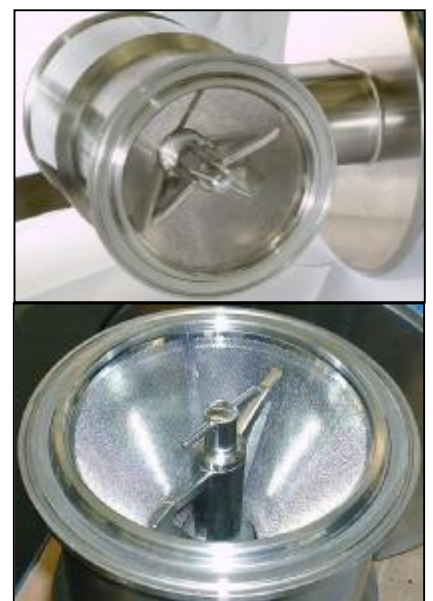
Hosokawa Bepex GmbH presents a new series of the conical BEXMILL with bottom drive and design for isolator technology with:

- Bottom drive
- Design for isolator
- Design for PSR 11



### What's New?

- New sizes  
BM 80 and BM 125
- Bottom drive
- Design for isolator  
technology
- Ideal for small  
batches and R & D  
work



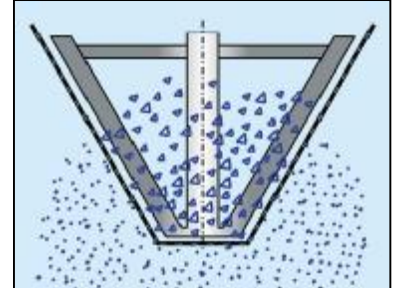


# HOSOKAWA BEPEX GmbH

*Technologies for compaction, briquetting, extrusion and spheronization*

## Features:

- Hygienic design
- Drive totally encapsulated
- Clamps for easy assembly
- Number of parts reduced
- Filter in inlet and outlet section



**BEXMILL BM 80 – Table Top Model**



# HOSOKAWA BEPEX GmbH

Technologies for compaction, briquetting, extrusion and spheronization

Exhibited on the POWTECH, Nuremberg 2005



## Isolator

### Safe and Clean

- Electrically controlled docking systems for feed and discharge ensure operational safety.
- The isolator is operated under negative pressure and permits an OEL level of  $< 1 \mu\text{g}/\text{m}^3$ .
- A WIP system is available.

### Feeding:

- Flood feeding – no dosed feed required.
- The minimal air flow requires no additional filter systems.

### ATEX

You are safe with us.

The mills are suitable for ATEX-Zone 1/21.

**BEXMILL BM 125**  
combined with twin  
dosing screw feeder and  
a spiral jet mill in an  
isolator



# HOSOKAWA BEPEX GmbH

Technologies for compaction, briquetting, extrusion and spheronization

## Conical Mill Now PSR 11

Hosokawa Bepex GmbH, Leingarten now manufactures the BEXMILL 400 in impact resistant design for 10 bar.

Emerging explosion pressure is safely kept within the machine.

In case of emergency, the units may deform but they do not burst with this design.

This means a high degree of safety for the plant operator.

The machine is laid out for WIP (Washing In Place). Return valves in the conduits guarantee safety.

New application cases for processing organic and metallic products arise for the impact resistant BEXMILL.



### Good Reasons

**Conical Mills are used for crushing agglomerates or for control screening.**

**Dust/ air mixtures can be explosive in relevant concentrations and if there is an energy source.**

**Inertising with N<sub>2</sub> or CO<sub>2</sub> can indeed guarantee that the oxygen concentration stays below the explosion limit but implicates high costs.**

**With the re-fitting of existing plants, the inertisation is often as problematic as the suppression of explosions.**

### **BEXMILL model BM 400 suitable for PSR 11**

Swing in and out to the process area – motor totally covered and externally cooled.